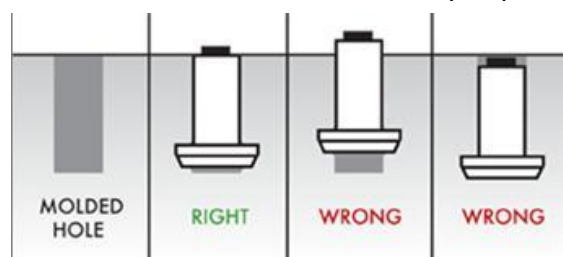


The Proper Use of Studded Winter Tires

Tire studs are small metal protrusions that can be inserted into certain winter tires to improve traction during snow and/or icy conditions. The choice between studded or non-studded winter tires depends on the consumer's needs. By understanding the special characteristics of each type of tire, you can choose the tire that best matches the needs of the consumer. If the consumer drives more on icy roads than on snow covered roads, studded tires are the better choice. Studded tires are especially suitable when temperatures hover around freezing where roads tend to be icy during the winter. Non-studded winter tires are a good choice for snow covered roads.

General Recommendations:

- The use of studs is restricted in some regions, so the consumer must be aware of the legal regulations and restrictions in his/her region.
- Consumers should consult with the authorized dealer to find out if studded snow tires will work for them. The authorized dealer will help the consumer to select the best tires to match the driving conditions.
- Studded winter tires should meet or exceed the original equipment manufacturers tire specifications. The only aspect that can be different than OEM specs is the tire speed rating. Most studded tires will have a speed rating that is lower than OEM specifications. It is the installer's responsibility to inform the consumer that they now have a lower speed rated tire. Observe the legal speed limits for studded tires as well as the recommended speed limit of the tire manufacturer.
- Studded winter tires should only be used in sets of four. Only using studded winter tires on the front or rear can cause unpredictable vehicle control issues.
- Never use oil-based lubricants for studding. We recommend using a 2% soap water solution.
- Avoid hard acceleration and hard braking during the first 100 km / 60 miles.
- Driving speed should be less than 31 mph (50 km/h) on studded tires for the first 60 miles (100 km).
- Always follow the manufacturer's recommendations for proper stud size.
- The Champiro IcePro line of winter tires can be used with or without studs.
- Each tire will require 90 to 130 studs. The amount will vary depending on the tire size.



If you have any questions please contact us at techservice@us.giti.com

GITI TIRE (USA), Ltd. 10404 Sixth Street - Rancho Cucamonga, CA 91730

Tel: 1-866-488-4737 - Fax: 1-909-476-4028

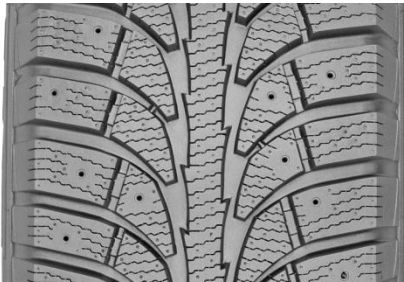
www.gtradial.com

The Proper Use of Studded Winter Tires

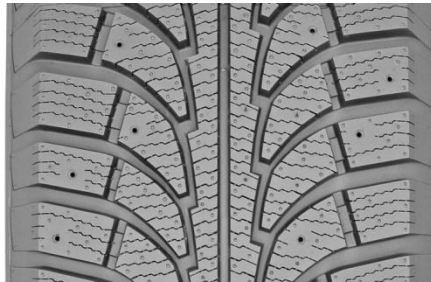
CHAMPIRO ICEPRO / CHAMPIRO ICEPRO SUV / CHAMPIRO ICEPRO 2

The IcePro tire line meet or exceed the severe snow service standards.

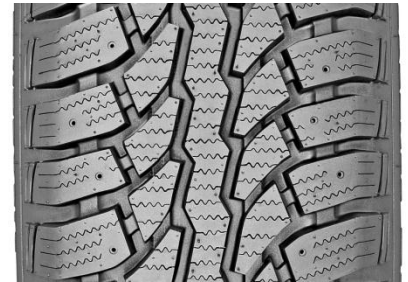
The tire is labeled with the 3 peak mountain snowflake symbol and is M&S Rated.



IcePro

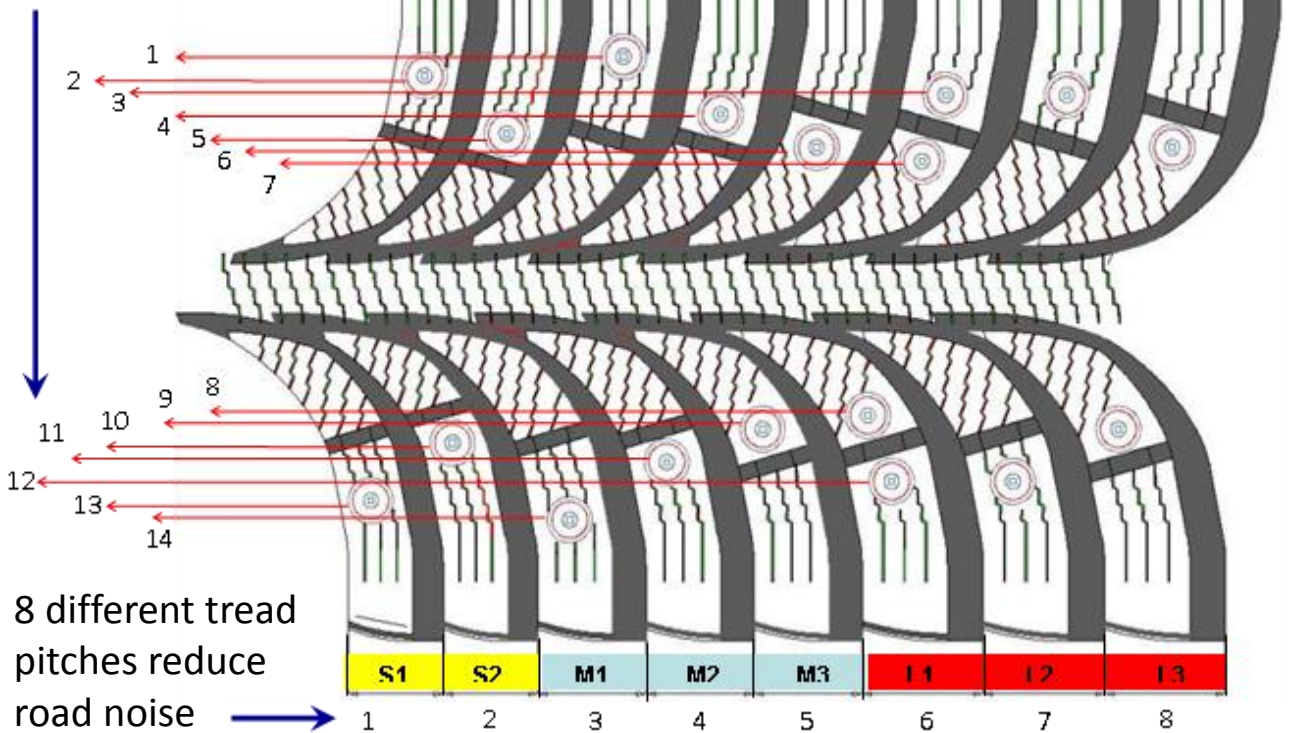


IcePro SUV



IcePro 2

14 Rows of studs to increase traction



8 different tread pitches reduce road noise

If you have any questions please contact us at techservice@us.giti.com

GITI TIRE (USA), Ltd. 10404 Sixth Street - Rancho Cucamonga, CA 91730

Tel: 1-866-488-4737 - Fax: 1-909-476-4028

www.gtrdial.com

10/27/13

GTR-00114

The Proper Use of Studded Winter Tires

Item Number	Tire Size	LI / SR	Load	TSMI #	European #	Stud Qty
IcePro						
100A1667	155/70R13	75 T		11	8-10/2	90
100A1664	175/70R13	82 T		11	8-10/2	90
100A1983	185/60R14	82 T		12	8-11/2	90
100A1497	175/65R14	86 T	XL	11	8-11/2	110
100A1499	185/65R14	90 T	XL	12	8-11/2	110
100A1787	175/70R14	84 T		11	8-10/2	110
100A1666	185/70R14	88 T		12	8-11/2	110
100A1984	185/55R15	86 T	XL	12	8-11/2	110
100A1985	195/55R15	89 T	XL	12	8-11/2	110
100A196	185/60R15	84 T		12	8-11/2	110
100A188	195/60R15	88 T		12	8-11/2	110
100A1500	185/65R15	92 T	XL	12	8-11/2	110
100A1498	195/65R15	95 T	XL	12	8-10/2	110
100A195	205/65R15	94 T		12	8-11/2	110
100A198	205/70R15	86 T		12	8-11/2	110
100A1986	205/75R15	97 T		12	8-11/2	130
100A1496	205/55R16	94 T	XL	12	8-11/2	130
100A1668	215/55R16	97 T	XL	12	8-11/2	130
100A1987	225/55R16	99 T	XL	12	8-11/2	130
100A1502	205/60R16	96 T	XL	12	8-11/2	130
100A192	215/60R16	95 T		12	8-11/2	130
100A190	225/60R16	98 T		12	8-11/2	130
100A1501	215/65R16	102 T	XL	12	8-11/2	130
100A1670	225/65R16	100 T		12	8-11/2	130
100A1665	225/45R17	94 T	XL	12	8-11/2	130
100A1989	235/45R17	97 T	XL	12	8-11/2	130
100A1988	215/50R17	91 T		12	8-11/2	110
100A1669	225/50R17	94 T		12	8-11/2	130
100A1602	215/55R17	98 T	XL	12	8-11/2	130
100A1788	225/55R17	97 T		12	8-11/2	130
100A199	215/60R17	96 T		12	8-11/2	130
100A193	225/60R17	99 T		12	8-11/2	130
100A1990	225/55R18	98 T		12	8-11/2	130

If you have any questions please contact us at techservice@us.giti.com

GITI TIRE (USA), Ltd. 10404 Sixth Street - Rancho Cucamonga, CA 91730

Tel: 1-866-488-4737 - Fax: 1-909-476-4028

www.gtrradial.com

The Proper Use of Studded Winter Tires

Item Number	Tire Size	LI /SR	Load	TMSI #	European #	Stud Qty
IcePro SUV						
100A183	215/70R15	98 T		12	8-11/2	110
100A1671	235/65R16	103 T		12	8-11/2	128
100A178	215/70R16	100 T		12	8-11/2	126
100A176	225/70R16	103 T		12	8-11/2	126
100A177	235/70R16	106 H		12	8-11/2	128
100A1783	245/70R16	107 H		12	8-11/2	128
100A1991	265/70R16	112 T		12	8-11/2	130
100A1784	225/75R16	108 T	XL	12	8-11/2	128
100A1785	245/75R16	111 H		12	8-11/2	128
100A1780	235/55R17	99 H		12	8-11/2	128
100A1682	225/65R17	102 T		12	8-11/2	128
100A1992	235/65R17	108 T	XL	12	8-11/2	128
100A1674	245/65R17	107 T		12	8-11/2	128
100A1993	265/65R17	112 T		12	8-11/2	130
100A179	245/70R17	110 T		12	8-11/2	130
100A180	265/70R17	115 T		12	8-11/2	130
100A1781	235/55R18	100 H		12	8-11/2	128
100A1672	255/55R18	109 T	XL	12	8-11/2	128
100A1673	235/60R18	107 T	XL	12	8-11/2	128
100A182	245/60R18	105 T		12	8-11/2	128
100A1782	235/65R18	106 H		12	8-11/2	128
100A181	275/65R18	116 T		12	8-11/2	130
100A1994	255/50R19	103 T		12	8-11/2	128

Item Number	Tire Size	LI /SR	Load	TMSI #	European #	Stud Qty
IcePro 2						
100A1012	LT225/75R16	115/112 Q		15	9-13/2	110
100A214	LT245/75R16	120/116 Q		15	9-13/2	110
100A1013	LT245/70R17	119/116 Q		15	9-13/2	110
100A1014	LT265/70R17	121/118 Q		15	9-13/2	110
100A1015	LT275/65R18	123/120 Q		15	9-13/2	110

If you have any questions please contact us at techservice@us.giti.com

GITI TIRE (USA), Ltd. 10404 Sixth Street - Rancho Cucamonga, CA 91730

Tel: 1-866-488-4737 - Fax: 1-909-476-4028

www.gtradial.com